



NEWSLETTER









WILDFIRE EDITION



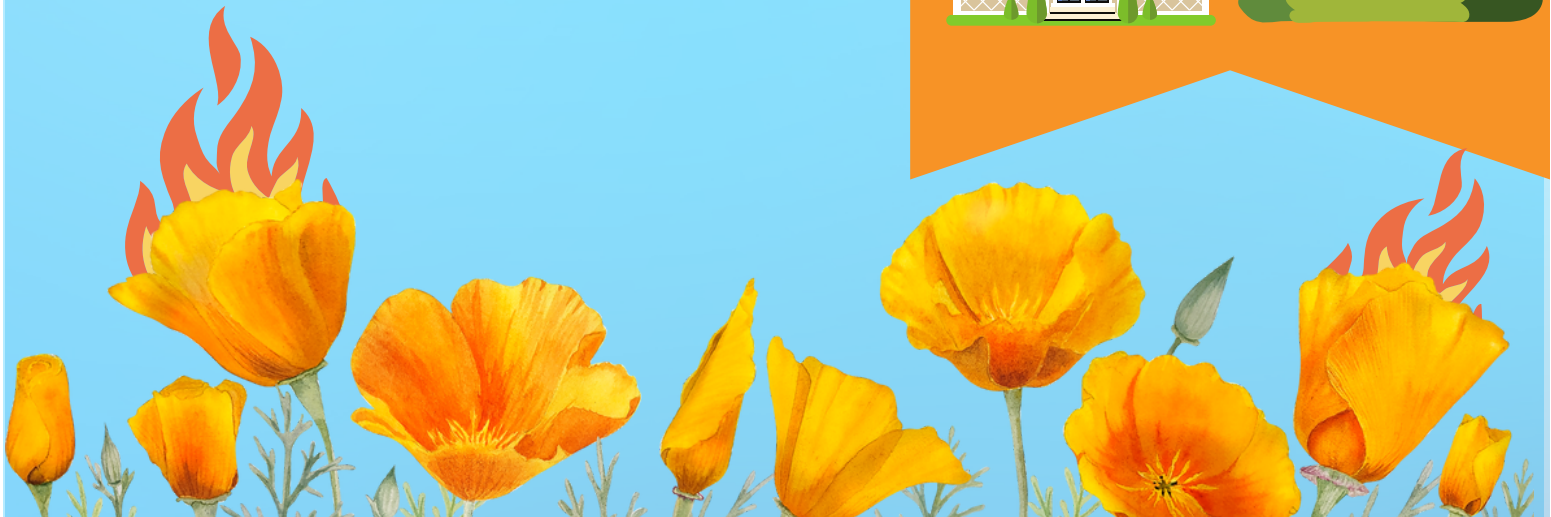
Learn how to keep yourself and your environment from getting too hot to handle!

With wildfire season approaching fast, it is important to:

-  **Learn how to prevent wildfires**
-  **Know if you are in the fire zone**
-  **Harden your home**
-  **Create a clean air room**
-  **Sign up for NotifyLA**
-  **Create an Emergency-go-kit**

READY, SET, GO!

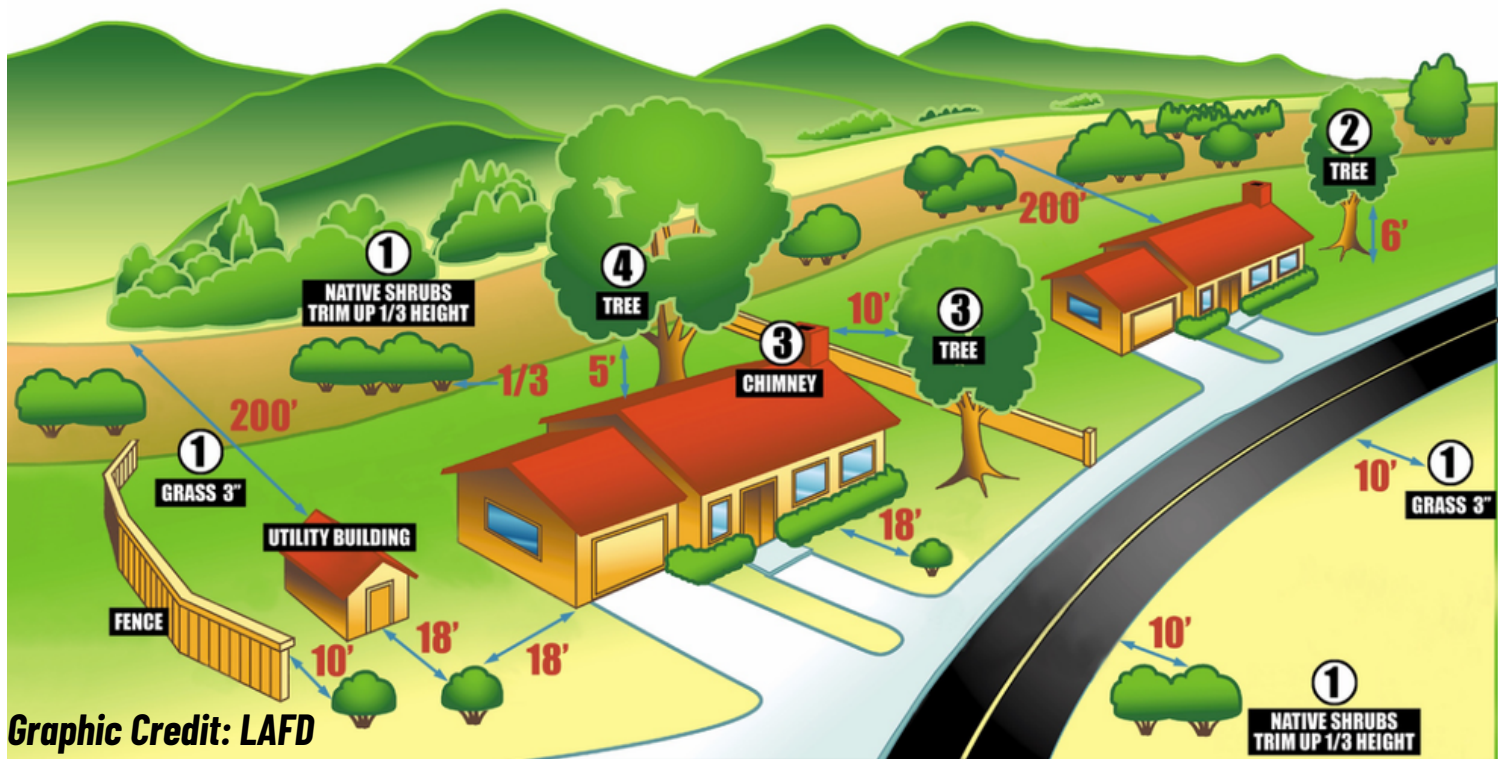
- **CLEAR BRUSH NEAR HOME**
- **CREATE A WILDFIRE PLAN**
- **MAKE AN EMERGENCY KIT**
- **EVACUATE WHEN ORDERED TO DO SO**



TIPS TO PROTECT YOUR HOME CREATING BRUSH CLEARANCE

*Do you live in an at-risk area for wildfires?
Follow these tips for clearing an area around your home to reduce the
risk of damage to your home and livelihood:*

- **Remove** all dead foliage and undergrowth regularly
- **Keep** weeds and grass ≤ 3 inches tall
- **Maintain** 5ft clearance between the roof and any tree branches
- **Trim** trees 10ft away from the rest of the home and other foliage
- **Limit** combustibile items (deck chairs, planters) near home
- **Create** defensible space zones around the house
- **Follow** the rest of LAFD's clearance requirements for a safe home!



Graphic Credit: LAFD